



Vuadens, trottoir Les Combes – La Dola

le 23 février 2022

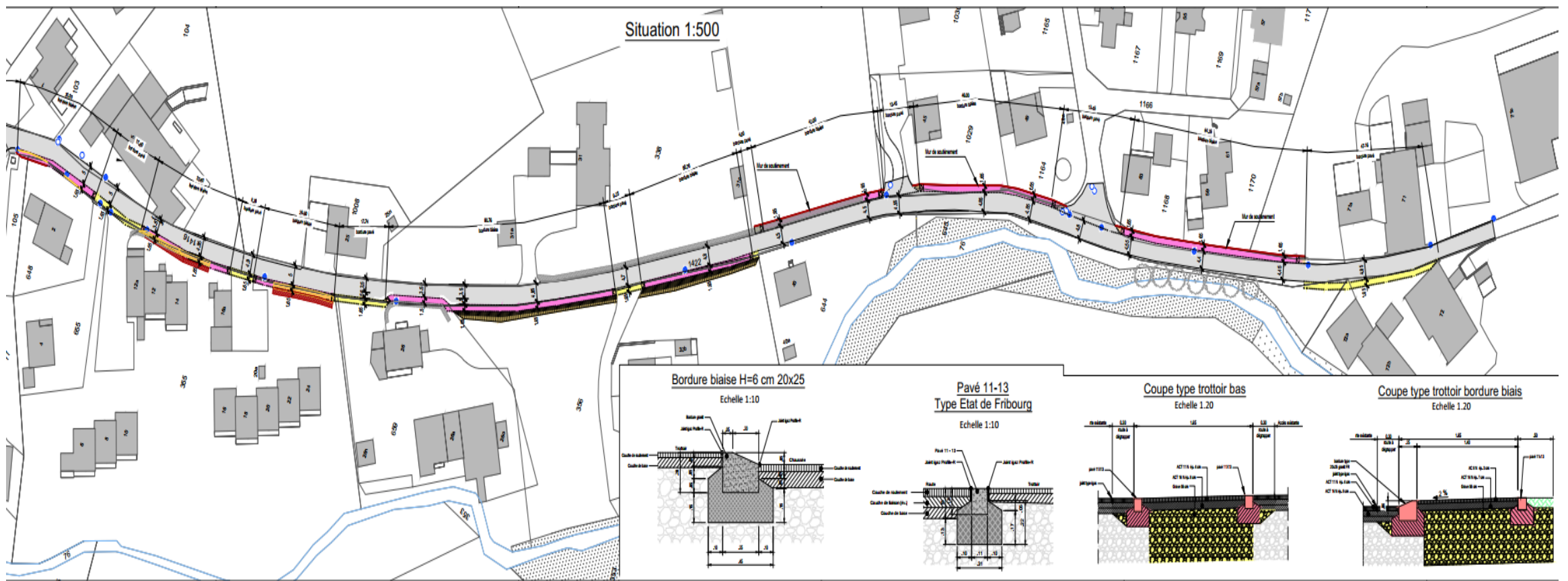
BUREAU
D'INGÉNIEURS

SABERT

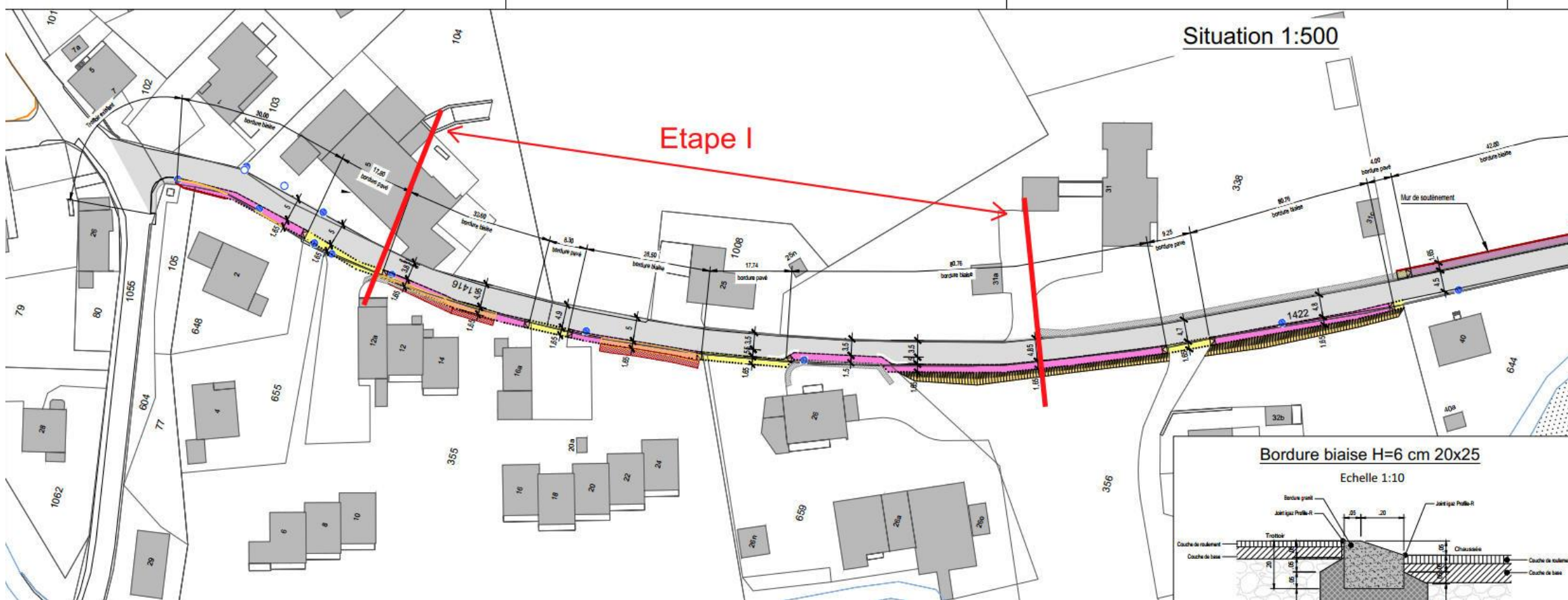
Projet



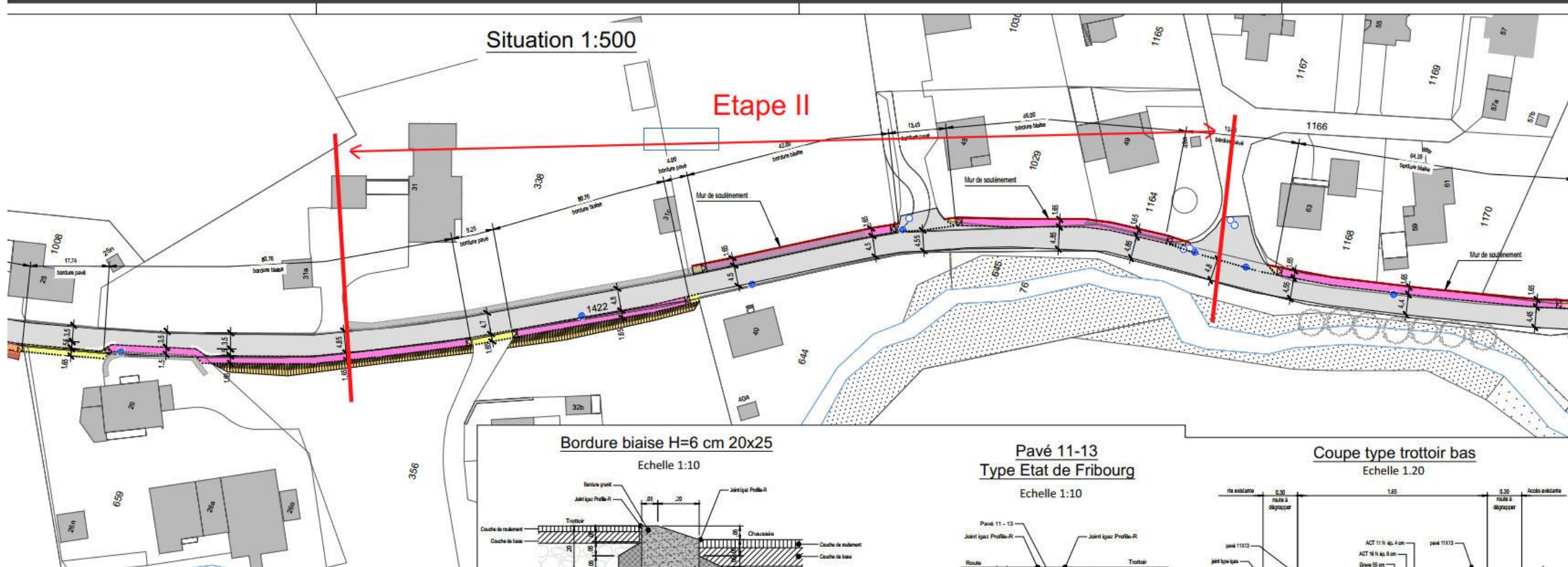
Situation et coupes types



Fermeture étape I

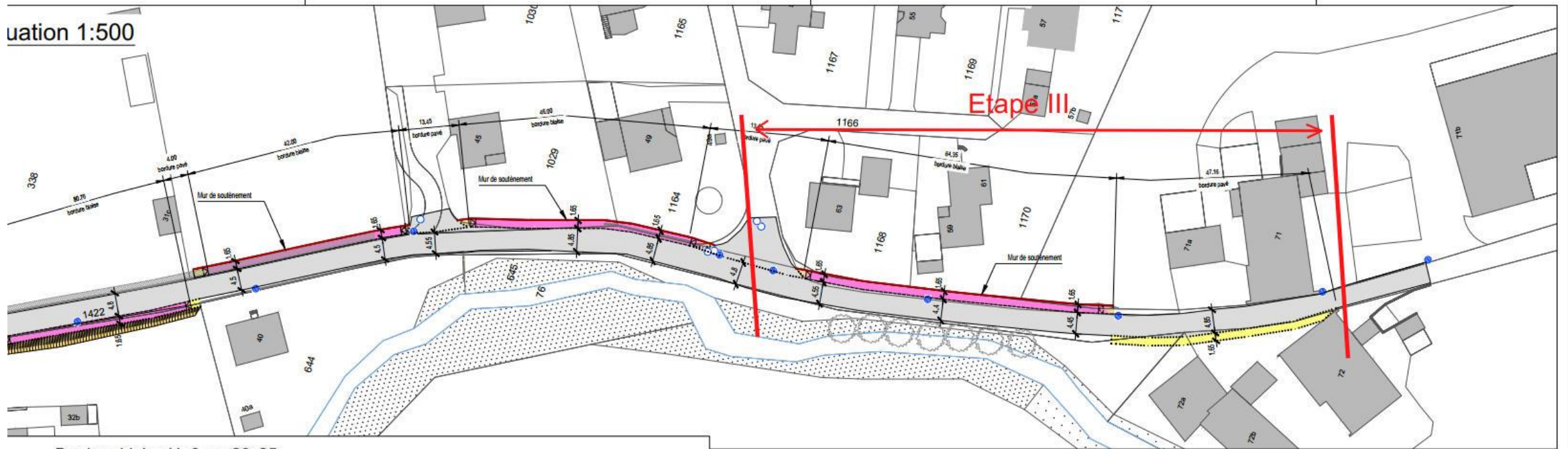


Fermeture étape II



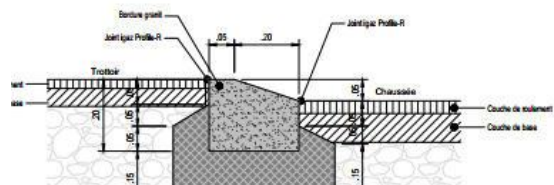
Fermeture étape III

Échelle 1:500



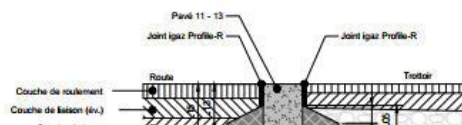
Bordure biais H=6 cm 20x25

Echelle 1:10



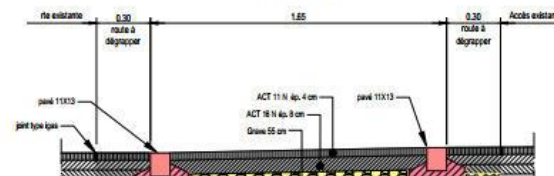
Pavé 11-13
Type Etat de Fribourg

Echelle 1:10



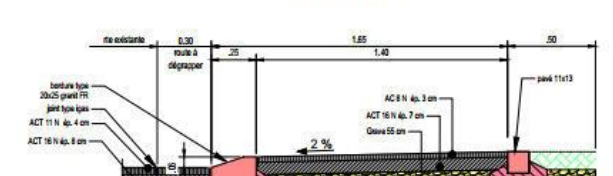
Coupe type trottoir bas

Echelle 1:20



Coupe type trottoir bordure biais

Echelle 1:20



Emprises I



Emprises II





Photos

































